

New bulb entry operation for NEC certified lamp bulb.

➤ First need to support NEC certified bulbs

NEC certified lamp bulbs are supported from the following NEC CPU Data, FW and DCC.

Before using NEC certified lamp bulb, apply them below or newer.

	NC3200S	NC2000C	NC1200C
NEC CPU DATA	Ver2.003	Ver2.002	Ver2.001
NEC CPU FW	Ver2.003	Ver2.002	Ver2.001
DCC	Ver2.0.0.0	Ver2.0.0.0	Ver2.0.0.0

➤ Bulb Entry List after new NEC CPU Data, FW, and DCC

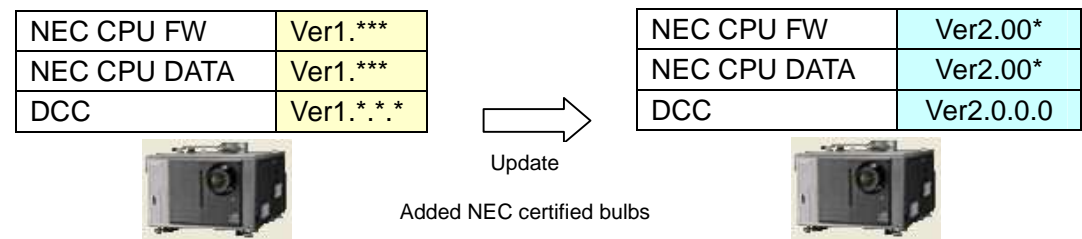
When NEC CPU Data, FW, and DCC above or newer are applied, the number of bulb entry list is expanded from 16 to 32.

NEC certified bulbs are appeared in 1..16. And their property(except for warranty) is NOT variable. NO NEC certified bulbs can be deleted from the list.

17..32 are used to register none certified bulbs. And their property is variable.

Bulbs which are registered on old software are defined as not-certified, so they are appeared in 17..32. Any bulbs from 17..32 can be deleted from the list.

Bulb entry list	Certified/None-certified	Property	Delete
01-16	Certified bulb	Not editable (except for warranty)	Not possible
17- 32	None-certified	Editable	Possible




Bulb Entry					
No.	Name	Current	Typ. Watt	Max Watt	Warning
1	NC-LP4501(OverDrive)	95.0/175.0[A]	4.50[kW]	6.00[kW]	400[H]
2	NC-LP6001(OverDrive)	105.0/175.0[A]	6.00[kW]	7.00[kW]	500[H]
3	NC-LP4501	95.0/145.0[A]	4.50[kW]	4.50[kW]	900[H]
4	NC-LP6001	105.0/155.0[A]	6.00[kW]	6.00[kW]	1000[H]
5	NC-55LP701	115.0/180.0[A]	7.00[kW]	7.00[kW]	500[H]
6					
7					
8					
9					
10					
11					
12					
13					
14					
15					
16					
17	NC-LP4501(OverDrive)	95.0/175.0[A]	4.50[kW]	6.00[kW]	400[H]
18	NC-LP6001(OverDrive)	105.0/175.0[A]	6.00[kW]	7.00[kW]	500[H]
19	NC-LP4501	95.0/145.0[A]	4.50[kW]	4.50[kW]	900[H]
20	NC-LP6001	105.0/155.0[A]	6.00[kW]	6.00[kW]	1000[H]
21	NC-55LP701	115.0/180.0[A]	7.00[kW]	7.00[kW]	500[H]
22					
23					
24					
25					
26					
27					
28					
29					
30					
31					
32					

NEC Certified bulbs

When there are additional certified bulb(s), NDSJ will update new NEC CPU Data for it/them. To add it/them into the projector, install new NEC CPU Data. Additional bulb(s) is shown in 1..16.


NEC CPU FW	Ver2.00*
NEC CPU DATA	Ver2.00*
DCC	Ver2.0.0.0



Update

Added new NEC certified bulb

NEC CPU FW	Ver2.00*
NEC CPU DATA	Ver2.****
DCC	Ver2.0.0.0



No.	Name	Current	Typ. Watt	Max Watt	Warning	Warranty
1	DSL 455N(OverDrive)	95.0/175.0[A]	4.50[kW]	6.00[kW]	400[H]	
2	DSL 605N(OverDrive)	105.0/175.0[A]	6.00[kW]	7.00[kW]	500[H]	
3	DSL 455N	95.0/145.0[A]	4.50[kW]	4.50[kW]	900[H]	
4	DSL 605N	105.0/155.0[A]	6.00[kW]	6.00[kW]	1000[H]	
5	DXL 705N	115.0/180.0[A]	7.00[kW]	7.00[kW]	500[H]	
6	XBO 6500W/HPN	115.0/180.0[A]	6.50[kW]	6.50[kW]	500[H]	
7	XDC 4500N	10.0/150.0[A]	4.50[kW]	4.50[kW]	900[H]	
8	NC-LP4501(OverDrive)	95.0/175.0[A]	4.50[kW]	6.00[kW]	400[H]	
9	NC-LP6001(OverDrive)	105.0/175.0[A]	6.00[kW]	7.00[kW]	500[H]	
10	NC-LP4501	95.0/145.0[A]	4.50[kW]	4.50[kW]	900[H]	
11	NC-LP6001	105.0/155.0[A]	6.00[kW]	6.00[kW]	1000[H]	
12	NC-55LP701	115.0/180.0[A]	7.00[kW]	7.00[kW]	500[H]	
13						
14						
15						
16						
17	NC-LP4501(OverDrive)	95.0/175.0[A]	4.50[kW]	6.00[kW]	400[H]	
18	NC-LP6001(OverDrive)	105.0/175.0[A]	6.00[kW]	7.00[kW]	500[H]	
19	NC-LP4501	95.0/145.0[A]	4.50[kW]	4.50[kW]	900[H]	
20	NC-LP6001	105.0/155.0[A]	6.00[kW]	6.00[kW]	1000[H]	
21	NC-55LP701	115.0/180.0[A]	7.00[kW]	7.00[kW]	500[H]	
22						
23						
32						

No.	Name	Current	Typ. Watt	Max Watt	Warning	Warranty
1	DSL 455N(OverDrive)	95.0/175.0[A]	4.50[kW]	6.00[kW]	400[H]	
2	DSL 605N(OverDrive)	105.0/175.0[A]	6.00[kW]	7.00[kW]	500[H]	
3	DSL 455N	95.0/145.0[A]	4.50[kW]	4.50[kW]	900[H]	
4	DSL 605N	105.0/155.0[A]	6.00[kW]	6.00[kW]	1000[H]	
5	DXL 705N	115.0/180.0[A]	7.00[kW]	7.00[kW]	500[H]	
6	XBO 6500W/HPN	115.0/180.0[A]	6.50[kW]	6.50[kW]	500[H]	
7	XDC 4500N	10.0/150.0[A]	4.50[kW]	4.50[kW]	900[H]	
8	NC-LP4501(OverDrive)	95.0/175.0[A]	4.50[kW]	6.00[kW]	400[H]	
9	NC-LP6001(OverDrive)	105.0/175.0[A]	6.00[kW]	7.00[kW]	500[H]	
10	NC-LP6002	100.0/150.0[A]	6.0[kW]	6.0[kW]	1100[H]	
11	NC-LP4501	95.0/145.0[A]	4.50[kW]	4.50[kW]	900[H]	
12	NC-LP6001	105.0/155.0[A]	6.00[kW]	6.00[kW]	1000[H]	
13	NC-55LP701	115.0/180.0[A]	7.00[kW]	7.00[kW]	500[H]	
14						
15						
16						
17	NC-LP4501(OverDrive)	95.0/175.0[A]	4.50[kW]	6.00[kW]	400[H]	
18	NC-LP6001(OverDrive)	105.0/175.0[A]	6.00[kW]	7.00[kW]	500[H]	
19	NC-LP4501	95.0/145.0[A]	4.50[kW]	4.50[kW]	900[H]	
20	NC-LP6001	105.0/155.0[A]	6.00[kW]	6.00[kW]	1000[H]	
21	NC-55LP701	115.0/180.0[A]	7.00[kW]	7.00[kW]	500[H]	
22						
23						
32						

➤ **NEC certified bulb list**

• NC3200S(Data Ver2.003) / NC3200S-A(Data Ver2.003-A)

Bulb Entry List No.	Bulb Name	Manufacturer
1	DXL-45SN(OverDrive)	USHIO
2	DXL-60SN(OverDrive)	USHIO
3	DXL-45SN	USHIO
4	DXL-60SN	USHIO
5	DXL-70SN	USHIO
6	XBO 6500W/HPN	OSRAM
7	XDC-4500N	Philips
8	NC-LP4501(OverDrive)	USHIO
9	NC-LP6001(OverDrive)	USHIO
10	NC-LP4501	USHIO
11	NC-LP6001	USHIO
12	NC-55LP701	USHIO

• NC2000C(Data Ver2.002) / NC2000C-A(Data Ver2.002-A)

Bulb Entry List No.	Bulb Name	Manufacturer
1	DXL-40SN	USHIO
2	DXL-40SCN	USHIO
3	DXL-40SN2	USHIO
4	DXL-20SN3	USHIO
5	XBO 4000W/HPN	OSRAM
6	NC-16LP401	USHIO
7	NC-16LP402	USHIO
8	NC-16LP401S	USHIO

• NC1200C(Data Ver2.001)

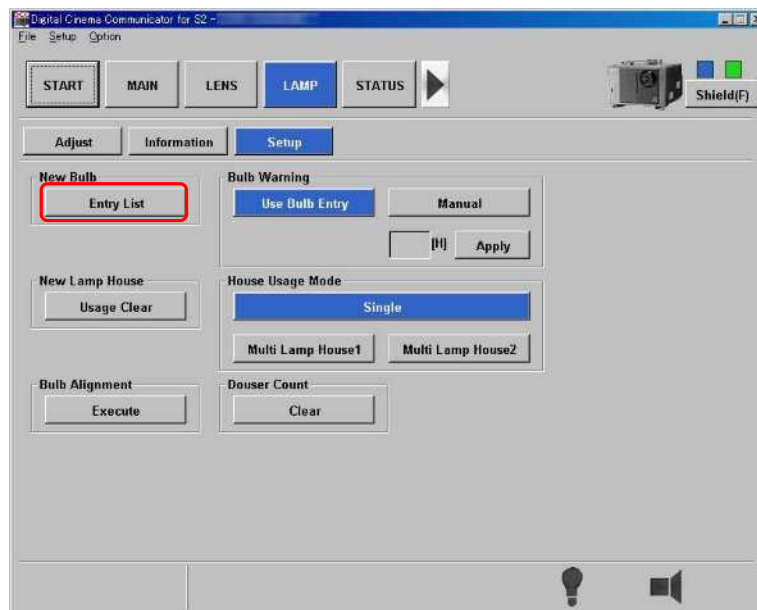
Bulb Entry List No.	Bulb Name	Manufacturer
1	DXL-20SN3	USHIO

➤ Operations to select NEC certified lamp bulb

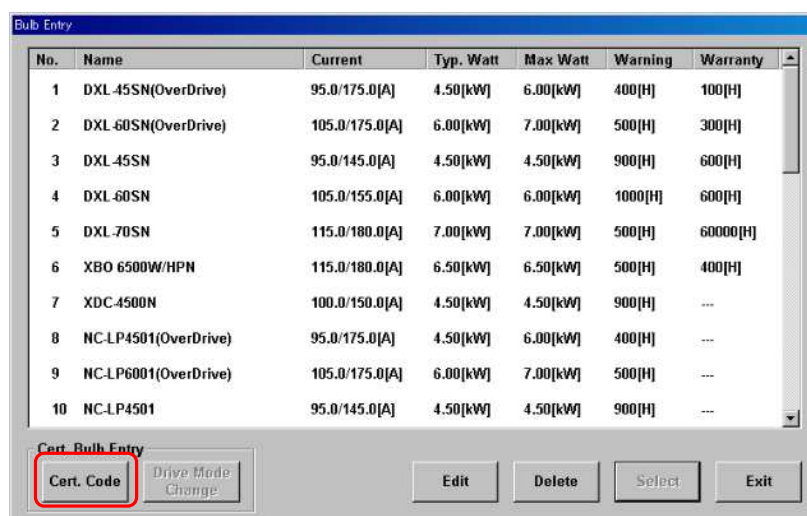
After updating NEC CPU Data, FW, and DCC, it is possible to use a certified bulb on the projector.

To select a certified bulb as current bulb, use cert code which is attached to packaging.
Bulb entry operation with cert code will make it easier to select the corresponding bulb from the bulb entry list.

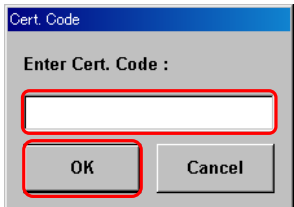
- (1) Click [Entry List] button while the projector is in standby mode.



- (2) The Bulb Entry dialog is opened.
Click on [Cert. Code] button.

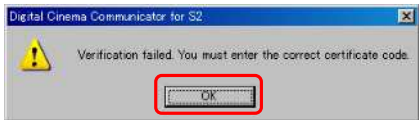


- (3) The Cert. Code dialog is open.
Enter the cert code then click on [OK] button.
If verification is success, go to (4).

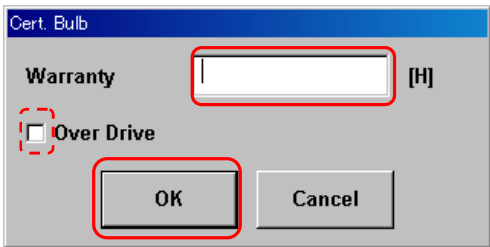


[Cancel] button: Cancel to enter cert code then back to (2).

If verification is not success, the next message is showing to announce failure.
Click on [OK] to close the message then enter proper cert code again.



- (4) If the corresponding bulb is found from 1..16, the next dialog is showing.
Edit warranty(default is 0).



([Cancel] button: back to (2).

Warranty field: Edit warranty time for the bulb.(Default value is 0.)

* The setting value is registered as default.

*Allow to enter NO warranty time. (The same as 0.)

If the bulb is supporting over drive mode, select the setting of Over Drive according to the next table.

Over Drive filed: Select drive mode.

<input checked="" type="checkbox"/> Over Drive	Select overdrive mode
<input type="checkbox"/> Over Drive	Select normal mode

*This function is available only when the bulb supports over drive mode.

When the completion of the settings, click on [OK]. Then go to (5).

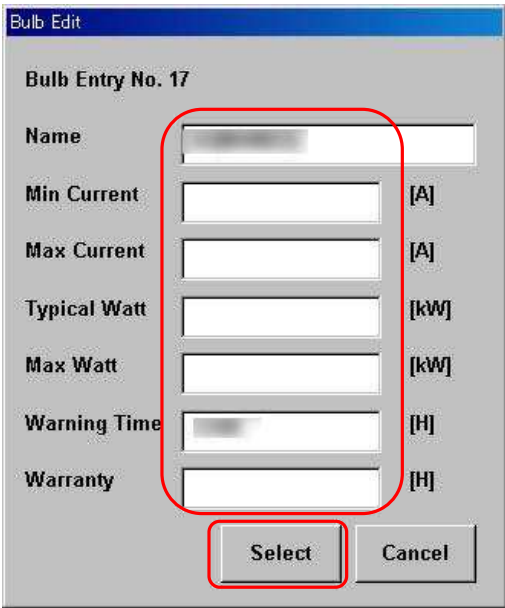
(4-1)

When the next message is showing, it means NO corresponding bulbs are found from 1..16 because the certified bulb is not registered new NEC CPU Data.



Click on [Y] button to open Bulb Edit dialog for this bulb. The bulb can be registered in vacant list from 17..32 to be activate as current bulb.

When the Bulb Edit dialog is showing, enter/edit necessary property to complete to register the bulb in the list. The default name/warning is showing automatically.(Default Name: Bulb ID + S/N)
Then click on [Select] and go to (5)

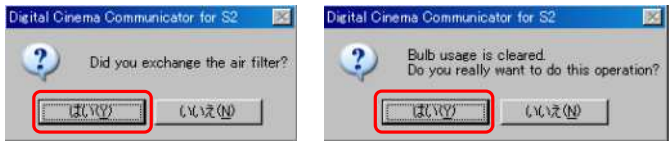


[Select]	Register the bulb in the list. And select as current.
[Cancel]	Cancel bulb edit/selection.(Go to (2))

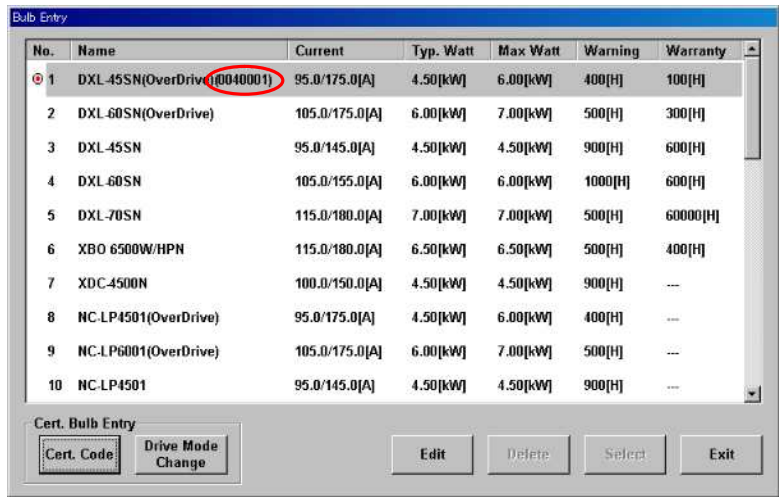
(4-2)

Once the bulb is registered in the list as described in (4-1), for the next entry, the bulb can be activated by using cert code until updating of NEC CPU Data.

(5) The next messages are showing, click on [Y] button.



(6) When the completion of activation of certified bulb, the bulb list is highlighted.
The bulb serial number is automatically attached behind the bulb name.



➤ Other operations

◆ [Drive Mode Change]

[Drive Mode Change] button should be used when drive mode(over drive/normal) is changed without removing current bulb.

[Drive Mode Change] button is available when the current bulb is certified bulb which is supporting over drive mode.

No.	Name	Current	Typ. Watt	Max Watt	Warning	Warranty
1	DXL 45SN(OverDrive)(0040001)	95.0/175.0[A]	4.50[kW]	6.00[kW]	400[H]	100[H]
2	DXL 60SN(OverDrive)	105.0/175.0[A]	6.00[kW]	7.00[kW]	500[H]	300[H]
3	DXL 45SN	95.0/145.0[A]	4.50[kW]	4.50[kW]	900[H]	600[H]
4	DXL 60SN	105.0/155.0[A]	6.00[kW]	6.00[kW]	1000[H]	600[H]
5	DXL 70SN	115.0/180.0[A]	7.00[kW]	7.00[kW]	500[H]	60000[H]
6	XBO 6500W/HPN	115.0/180.0[A]	6.50[kW]	6.50[kW]	500[H]	400[H]
7	XDC 4500N	100.0/150.0[A]	4.50[kW]	4.50[kW]	900[H]	---
8	NC-LP4501(OverDrive)	95.0/175.0[A]	4.50[kW]	6.00[kW]	400[H]	---
9	NC-LP6001(OverDrive)	105.0/175.0[A]	6.00[kW]	7.00[kW]	500[H]	---
10	NC-LP4501	95.0/145.0[A]	4.50[kW]	4.50[kW]	900[H]	---

Buttons: Cert. Code, Drive Mode Change, Edit, Delete, Select, Exit

1 -> 3 select change. Are you sure?

Buttons: Yes(Y), No(N)

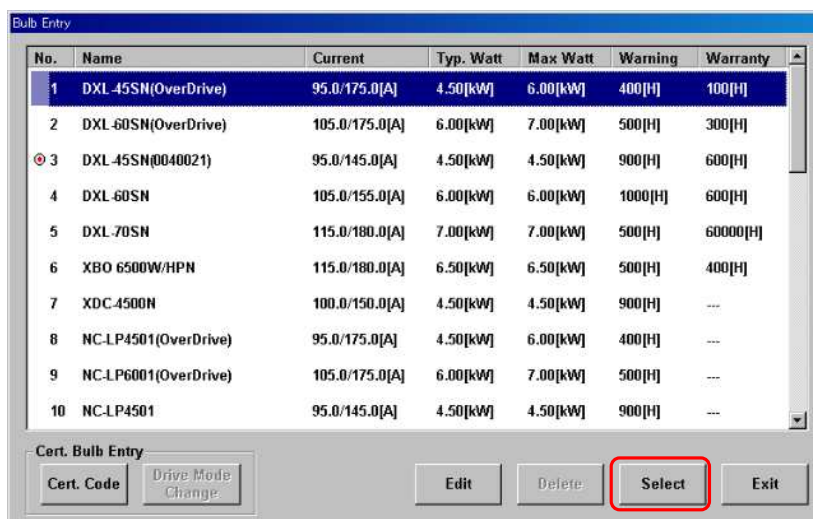
No.	Name	Current	Typ. Watt	Max Watt	Warning	Warranty
1	DXL 45SN(OverDrive)	95.0/175.0[A]	4.50[kW]	6.00[kW]	400[H]	100[H]
2	DXL 60SN(OverDrive)	105.0/175.0[A]	6.00[kW]	7.00[kW]	500[H]	300[H]
3	DXL 45SN(0040001)	95.0/145.0[A]	4.50[kW]	4.50[kW]	900[H]	600[H]
4	DXL 60SN	105.0/155.0[A]	6.00[kW]	6.00[kW]	1000[H]	600[H]
5	DXL 70SN	115.0/180.0[A]	7.00[kW]	7.00[kW]	500[H]	60000[H]
6	XBO 6500W/HPN	115.0/180.0[A]	6.50[kW]	6.50[kW]	500[H]	400[H]
7	XDC 4500N	100.0/150.0[A]	4.50[kW]	4.50[kW]	900[H]	---
8	NC-LP4501(OverDrive)	95.0/175.0[A]	4.50[kW]	6.00[kW]	400[H]	---
9	NC-LP6001(OverDrive)	105.0/175.0[A]	6.00[kW]	7.00[kW]	500[H]	---
10	NC-LP4501	95.0/145.0[A]	4.50[kW]	4.50[kW]	900[H]	---

Buttons: Cert. Code, Drive Mode Change, Edit, Delete, Select, Exit

When drive mode is changed, air filter/bulb usage which has been counted up to the time will be not cleared.

◆ [Select]

Not only none-certified bulb but also certified bulb can be activated directly by [Select] button. However, bulb S/N is not appeared in the bulb name when certified bulb is activated by [Select] button. Because using cert code is the recommended entry.

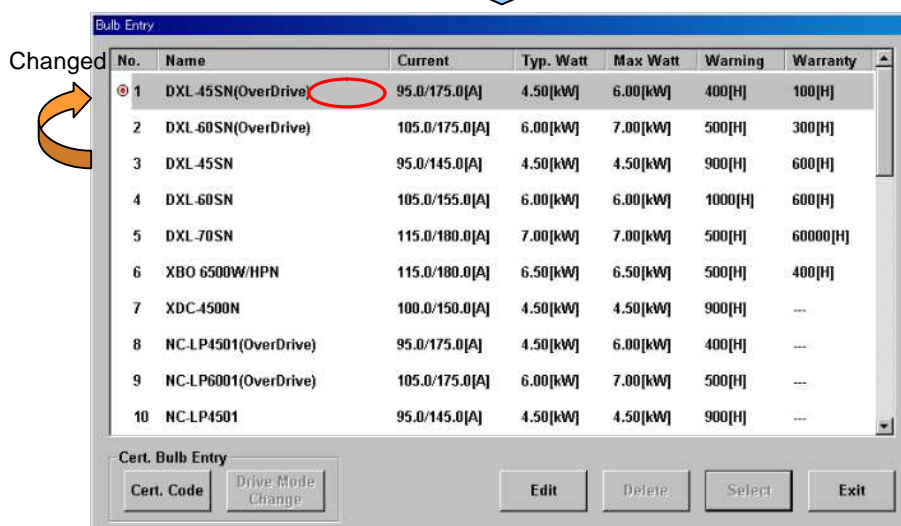


No.	Name	Current	Typ. Watt	Max Watt	Warning	Warranty
1	DXL 45SN(OverDrive)	95.0/175.0[A]	4.50[kW]	6.00[kW]	400[H]	100[H]
2	DXL 60SN(OverDrive)	105.0/175.0[A]	6.00[kW]	7.00[kW]	500[H]	300[H]
3	DXL 45SN(0040021)	95.0/145.0[A]	4.50[kW]	4.50[kW]	900[H]	600[H]
4	DXL 60SN	105.0/155.0[A]	6.00[kW]	6.00[kW]	1000[H]	600[H]
5	DXL 70SN	115.0/180.0[A]	7.00[kW]	7.00[kW]	500[H]	60000[H]
6	XBO 6500W/HPN	115.0/180.0[A]	6.50[kW]	6.50[kW]	500[H]	400[H]
7	XDC 4500N	100.0/150.0[A]	4.50[kW]	4.50[kW]	900[H]	---
8	NC-LP4501(OverDrive)	95.0/175.0[A]	4.50[kW]	6.00[kW]	400[H]	---
9	NC-LP6001(OverDrive)	105.0/175.0[A]	6.00[kW]	7.00[kW]	500[H]	---
10	NC-LP4501	95.0/145.0[A]	4.50[kW]	4.50[kW]	900[H]	---

Buttons: Cert. Code, Drive Mode Change, Edit, Delete, **Select**, Exit



Changed



No.	Name	Current	Typ. Watt	Max Watt	Warning	Warranty
1	DXL 45SN(OverDrive)	95.0/175.0[A]	4.50[kW]	6.00[kW]	400[H]	100[H]
2	DXL 60SN(OverDrive)	105.0/175.0[A]	6.00[kW]	7.00[kW]	500[H]	300[H]
3	DXL 45SN	95.0/145.0[A]	4.50[kW]	4.50[kW]	900[H]	600[H]
4	DXL 60SN	105.0/155.0[A]	6.00[kW]	6.00[kW]	1000[H]	600[H]
5	DXL 70SN	115.0/180.0[A]	7.00[kW]	7.00[kW]	500[H]	60000[H]
6	XBO 6500W/HPN	115.0/180.0[A]	6.50[kW]	6.50[kW]	500[H]	400[H]
7	XDC 4500N	100.0/150.0[A]	4.50[kW]	4.50[kW]	900[H]	---
8	NC-LP4501(OverDrive)	95.0/175.0[A]	4.50[kW]	6.00[kW]	400[H]	---
9	NC-LP6001(OverDrive)	105.0/175.0[A]	6.00[kW]	7.00[kW]	500[H]	---
10	NC-LP4501	95.0/145.0[A]	4.50[kW]	4.50[kW]	900[H]	---

Buttons: Cert. Code, Drive Mode Change, Edit, Delete, Select, Exit

◆ [Edit]

Warranty of certified bulb is editable by [Edit] button even if the bulb is current or not.

The next table shows what property of the bulb is editable.

O: Editable

X: Not editable

	Certified bulb	None-certified bulb
Name	X	O
Current	X	O
Typ. Watt	X	O
Max Watt	X	O
Warning	X	O
Warranty	O	O

The next table shows projector behavior when the completion of edit of current bulb.

	Current bulb	
	Certified bulb	None-certified bulb
Air filter / Bulb usage	Not cleared	Cleared
Usage Reset Log	Not logged	Logged

◆ Delete

Not allow to delete certified bulbs from the list.

➤ Bulb usage management

■ Bulb Usage

When drive mode is changed, bulb usage which has been counted up to the time will be not cleared.

Bulb Entry

No.	Name	Current	Typ. Watt	Max Watt	Warning	Warranty
1	DXL 45SN(OverDrive)	95.0/175.0[A]	4.50[kW]	6.00[kW]	400[H]	100[H]
2	DXL 60SN(OverDrive)(0040001)	105.0/175.0[A]	6.00[kW]	7.00[kW]	500[H]	300[H]
3	DXL 45SN	95.0/145.0[A]	4.50[kW]	4.50[kW]	900[H]	600[H]
4	DXL 60SN	105.0/155.0[A]	6.00[kW]	6.00[kW]	1000[H]	600[H]
5	DXL 70SN	115.0/180.0[A]	7.00[kW]	7.00[kW]	500[H]	60000[H]
6	XBO 6500W/HPN	115.0/180.0[A]	6.50[kW]	6.50[kW]	500[H]	400[H]
7	XDC 4500N	100.0/150.0[A]	4.50[kW]	4.50[kW]	900[H]	---
8	NC-LP4501(OverDrive)	95.0/175.0[A]	4.50[kW]	6.00[kW]	400[H]	---
9	NC-LP6001(OverDrive)	105.0/175.0[A]	6.00[kW]	7.00[kW]	500[H]	---
10	NC-LP4501	95.0/145.0[A]	4.50[kW]	4.50[kW]	900[H]	---

Cert. Bulb Entry

Cert. Code Drive Mode Change Edit Delete Select Exit



Digital Cinema Communicator for S2 - [LAN: 10.32.80.47]

File Setup Option

START MAIN LENS LAMP STATUS

Adjust Information Setup

Lamp PS Type	7kW	Lamp Bulb			
Lamp PS Version		Name	DXL 60SN(OverDrive)(0040001)		
Product Model	5	Min Current	105.0 [A]		
Product number	503	Max Current	175.0 [A]		
Hard Version	0	Typical Watt	6.00 [kW]		
Soft Version	1	Max Watt	7.00 [kW]		
		Warning Time	500 [H]		
		Warranty	300 [H]		
Output	0.0 [A]	Usage	Warning	Warranty	
	0.00 [kW]	Bulb (Normal)	1000 [H]	600 [H]	
		Bulb (Over Drive)	500 [H]	300 [H]	
		Lamp House	0 [H]		
		AC On Fan	2171 [H]	0 [H]	
		Power On Fan	573 [H]		
		Lamp Fan	1573 [H]		
			481 [H]		



Use lamp for 100H

Digital Cinema Communicator for S2 - [LAN: 10.32.80.47]

File Setup Option

START MAIN LENS **LAMP** STATUS

Adjust Information Setup

Lamp PS Type: 7kW
Lamp PS Version: 5
Product Model: 503
Product number: 503
Hard Version: 0
Soft Version: 1

Lamp Bulb Name: Min Current: Max Current: Typical Watt: Max Watt: 7.00 [kW]
Warning Time: 500 [H]
Warranty: 300 [H]

Output: 0.0 [A]
0.00 [kW]

Usage:
Bulb (Normal): 200 [H]
Bulb (Over Drive): 100 [H]
Lamp House: 2171 [H]
AC On Fan: 573 [H]
Power On Fan: 1573 [H]
Lamp Fan: 481 [H]

Warning: 1000 [H]
500 [H]
0 [H]

Warranty: 600 [H]
300 [H]
300 [H]

Bulb usage which is counted up to the time is converted in normal mode unit.

Information of current drive mode is highlighted.
Bulb usage which is counted up to the time is converted in over drive mode unit.

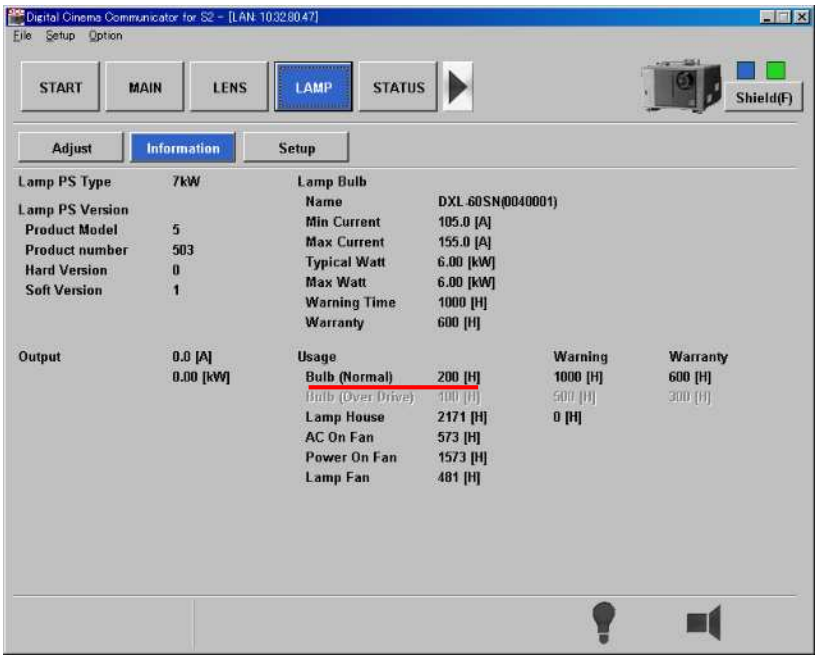
Drive Mode Change

Bulb Entry

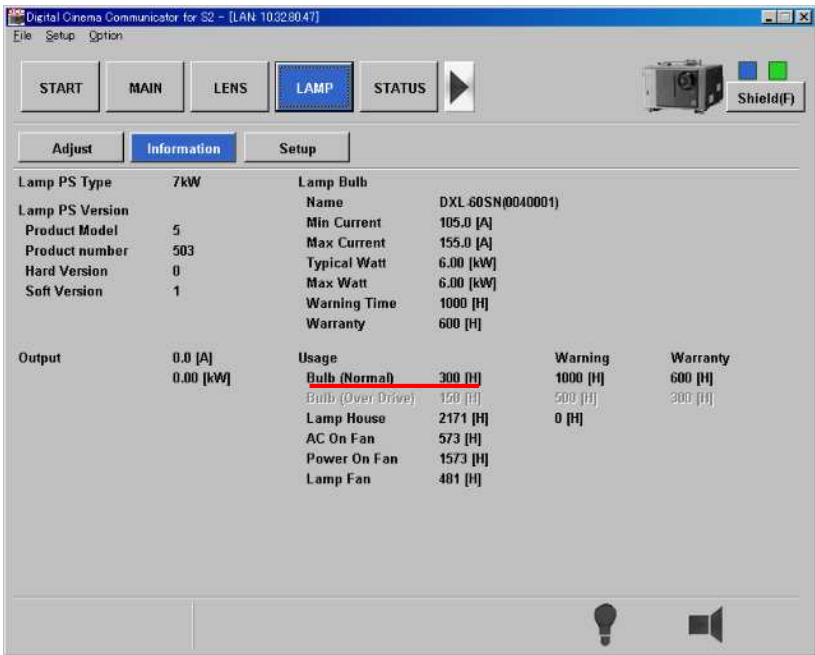
No.	Name	Current	Typ. Watt	Max Watt	Warning	Warranty
1	DXL 45SN(OverDrive)	95.0/175.0[A]	4.50[kW]	6.00[kW]	400[H]	100[H]
2	DXL 60SN(OverDrive)	105.0/175.0[A]	6.00[kW]	7.00[kW]	500[H]	300[H]
3	DXL 45SN	95.0/145.0[A]	4.50[kW]	4.50[kW]	900[H]	600[H]
4	DXL 60SN(0040001)	105.0/155.0[A]	6.00[kW]	6.00[kW]	1000[H]	600[H]
5	DXL 70SN	115.0/180.0[A]	7.00[kW]	7.00[kW]	500[H]	60000[H]
6	XBO 6500W/HPN	115.0/180.0[A]	6.50[kW]	6.50[kW]	500[H]	400[H]
7	XDC-4500N	100.0/150.0[A]	4.50[kW]	4.50[kW]	900[H]	---
8	NC-LP4501(OverDrive)	95.0/175.0[A]	4.50[kW]	6.00[kW]	400[H]	---
9	NC-LP6001(OverDrive)	105.0/175.0[A]	6.00[kW]	7.00[kW]	500[H]	---
10	NC-LP4501	95.0/145.0[A]	4.50[kW]	4.50[kW]	900[H]	---

Cert. Bulb Entry

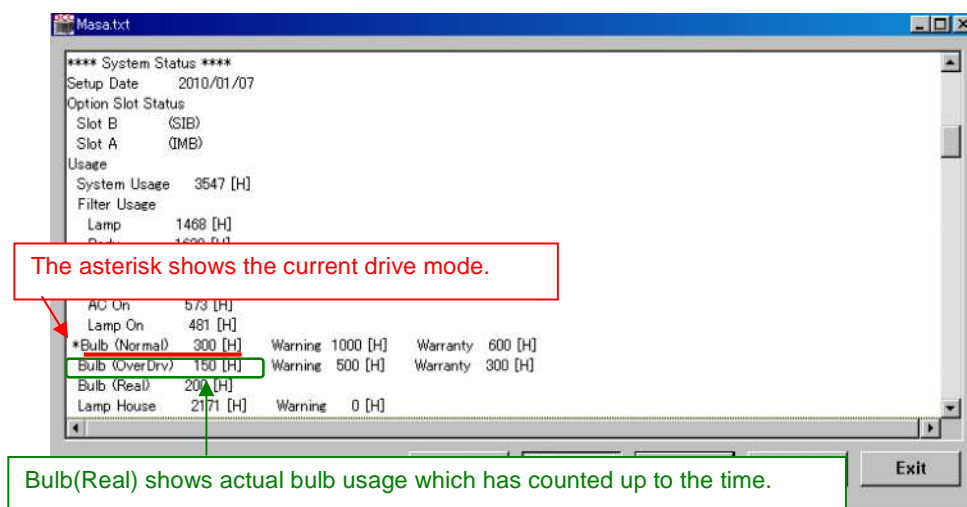
Cert. Code: **Drive Mode Change** Edit Delete Select Exit



Use lamp for 100H

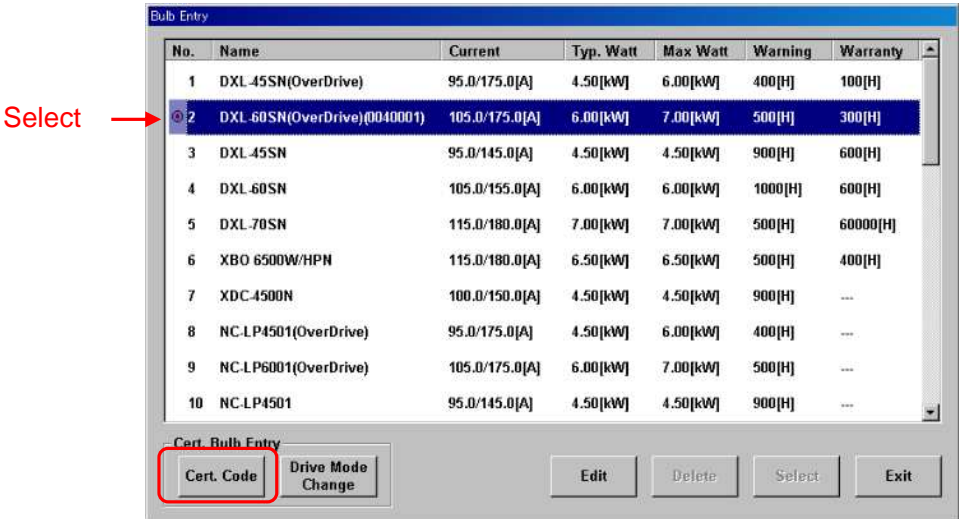


The bulb usage information of log file at this point.

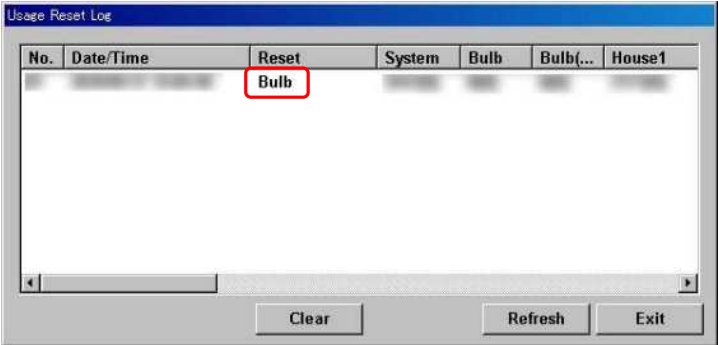


■ Usage Reset Log

Warranty field is added in usage reset log.
And “Drive Mode” is added in Reset field of Usage Reset Log.



Usage Reset Log at this point.



Use lamp for 100H

Drive Mode Change

No.	Name	Current	Typ. Watt	Max Watt	Warning	Warranty
1	DXL-45SN(OverDrive)	95.0/175.0[A]	4.50[kW]	6.00[kW]	400[H]	100[H]
2	DXL-60SN(OverDrive)	105.0/175.0[A]	6.00[kW]	7.00[kW]	500[H]	300[H]
3	DXL-45SN	95.0/145.0[A]	4.50[kW]	4.50[kW]	900[H]	600[H]
4	DXL-60SN(0040001)	105.0/155.0[A]	6.00[kW]	6.00[kW]	1000[H]	600[H]
5	DXL-70SN	115.0/180.0[A]	7.00[kW]	7.00[kW]	500[H]	60000[H]
6	XBO-6500W/HPN	115.0/180.0[A]	6.50[kW]	6.50[kW]	500[H]	400[H]
7	XDC-4500N	100.0/150.0[A]	4.50[kW]	4.50[kW]	900[H]	---
8	NC-LP4501(OverDrive)	95.0/175.0[A]	4.50[kW]	6.00[kW]	400[H]	---
9	NC-LP6001(OverDrive)	105.0/175.0[A]	6.00[kW]	7.00[kW]	500[H]	---
10	NC-LP4501	95.0/145.0[A]	4.50[kW]	4.50[kW]	900[H]	---

Cert. Bulb Entry

Cert. Code **Drive Mode Change** Edit Delete Select Exit

Usage Reset Log at this point.

No.	Date/Time	Reset	System	Bulb	Bulb(OverDrive)	Ho
		Bulb				
		Drive Mode		0[H]	100[H]	

Clear Refresh Exit

Use lamp for 100H

Drive Mode Change

No.	Name	Current	Typ. Watt	Max Watt	Warning	Warranty
1	DXL-45SN(OverDrive)	95.0/175.0[A]	4.50[kW]	6.00[kW]	400[H]	100[H]
2	DXL-60SN(OverDrive)(0040022)	105.0/175.0[A]	6.00[kW]	7.00[kW]	500[H]	300[H]
3	DXL-45SN	95.0/145.0[A]	4.50[kW]	4.50[kW]	900[H]	600[H]
4	DXL-60SN	105.0/155.0[A]	6.00[kW]	6.00[kW]	1000[H]	600[H]
5	DXL-70SN	115.0/180.0[A]	7.00[kW]	7.00[kW]	500[H]	60000[H]
6	XBO-6500W/HPN	115.0/180.0[A]	6.50[kW]	6.50[kW]	500[H]	400[H]
7	XDC-4500N	100.0/150.0[A]	4.50[kW]	4.50[kW]	900[H]	---
8	NC-LP4501(OverDrive)	95.0/175.0[A]	4.50[kW]	6.00[kW]	400[H]	---
9	NC-LP6001(OverDrive)	105.0/175.0[A]	6.00[kW]	7.00[kW]	500[H]	---
10	NC-LP4501	95.0/145.0[A]	4.50[kW]	4.50[kW]	900[H]	---

Cert. Bulb Entry

Cert. Code **Drive Mode Change** Edit Delete Select Exit

Usage Reset Log

No.	Date/Time	Reset	System	Bulb	Bulb(OverDrive)	Ho
		Bulb				
		Drive Mode		0[H]	100[H]	
		Drive Mode		100[H]	100[H]	

Clear Refresh Exit

■ Bulb usage overs warranty

When the bulb usage is over warranty which is defined in current bulb, “(280) Bulb Warranty Over” occurs on the projector.(Warning level, logged and rear led lights in red.)